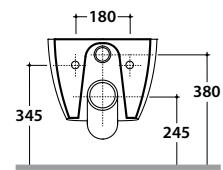
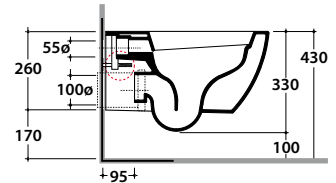
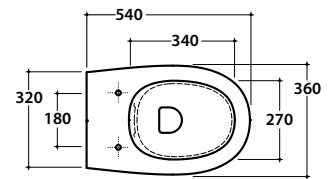


4ALL VASO MDS03.BI

GLOBO



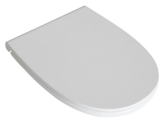
Cod. **MDS03.BI**

Vaso sospeso SENZABRIDA® con sistema di fissaggio dal basso nascosto.

Scarico 4,5/3 Lt. Peso 18 kg.

Wall-hung pan SENZABRIDA® provided with lower hidden fixing system.

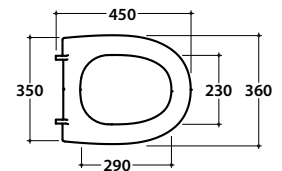
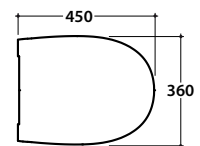
Drain 4,5/3 Lt. Weight 18 kg.



Cod. **MD019BI**

Coprivaso in termoindurente. Peso 3 kg.

Thermo-setting seat-cover. Weight 3 kg.



Cod. **MD020BI**

Coprivaso in termoindurente chiusura rallentata. Peso 3 kg.

Thermo-setting seat-cover with soft-closing system. Weight 3 kg.



Cod. **VA132**

Riduttore flusso di scarico.

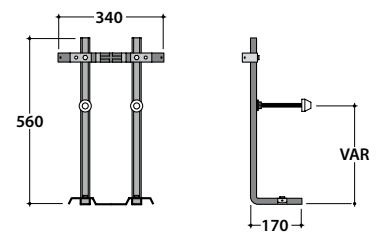
Flow reductor.



Cod. **FI002**

Staffa di fissaggio a "L". (Barra filettata \varnothing 12). Peso 2,5 kg.

Fixing brackets for W/H sanitary. Threaded bar \varnothing 12. Weight 2,5 kg.



Cod. **PU001**

Protezione antiurto e acustica. Peso 0,2 kg.

Acoustic and crash protection. Weight 0,2 kg.